



Help us build the . . . .

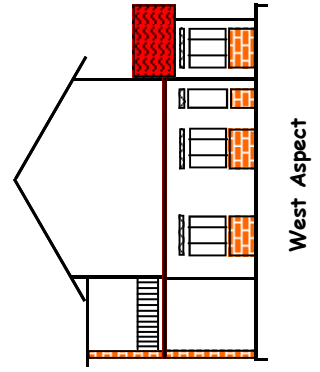
# Education Centre

## The Building

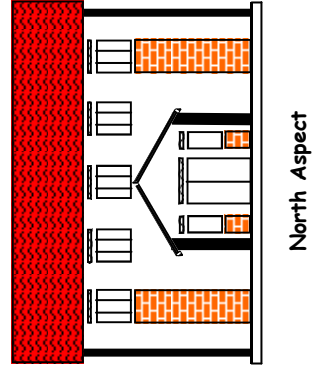
The Education Centre will be a double storey structure with a computer suite with internet access in the more secure upper storey. The south facing balcony of the upper floor will overlook the new sportsfield and further on Lake Victoria with its islands and surrounding hills. The Educational Centre will be built in the same style as the already existing buildings. ( see below)



The Main Building at Discovery Centre



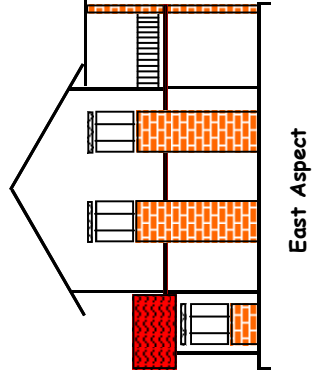
West Aspect



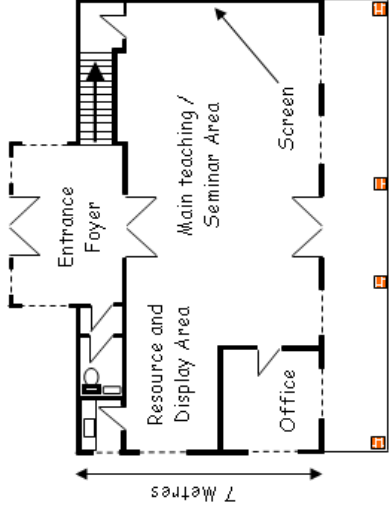
North Aspect



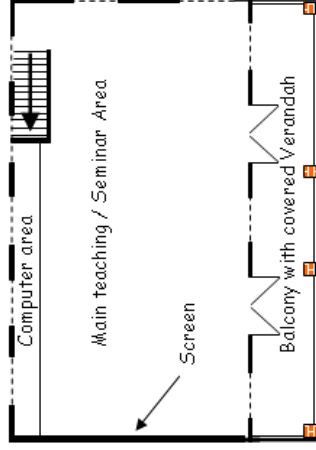
South Aspect



East Aspect



Ground Floor Plan



First Floor Plan

## Uses of the Education Centre

1. As a resource for the local schools in the surrounding area of Discovery Centre, many of whom have no electricity yet alone computing facilities. This will open up other ministry opportunities in the schools.
2. As a resource for the groups coming from the displaced peoples camps in the northern part of Uganda. This program of bringing young people down from the camps is now well established and looked upon as being very beneficial by the government authorities for the camps. (see Operation Northern Child on the web site)
3. As a resource to train Ugandan health workers in the camps as they come to Discovery Centre for a period of respite from the work they are involved in.
4. As a hub to link schools in Uganda and the UK

## Discovery Centre

Discovery Centre is a unique residential facility on a 23 acre site near Lake Victoria 12 kms. east of Jinja. in Uganda. It has been in existence for over ten years, with various developments taking place over that time. As part of the continuing development, an exciting new project has been launched, this is the creation of an **Education Centre**.

# Discovery Centre Uganda

The **Education Centre** will be a great asset to the AIDS and other education programs. Strong links have already been established with educational professionals and institutes both in East Africa and the UK. This will ensure that it will become a place of excellent educational practice and innovation.

For more details please see the web site at: [www.discoverycentres.org.uk](http://www.discoverycentres.org.uk)

## Cost of the Education Centre

	£
Construction of the two storey building	35,000
Bringing mains electricity to the building	1,500
Construction of roadway and landscaping	1,500
Furnishing the building	4,500
Suite of computers	15,000
<b>Total cost</b>	<b>£57,500</b>

## Supporting the Education Centre

### Making a donation by cheque

Please make your cheque payable to:

#### Adventure Projects Trust

and send to the address below

36 The Knoll  
Brixworth  
Northampton NN6 9HY

### Making a donation directly into the Trust's bank account

The details are shown below:

#### Adventure Projects Trust

Account Number 20214086

Sort Code 20-61-51

Barclay's Bank PLC

P.O. Box 23

St. Giles Square

Northampton NN1 1DB

*As a tax payer your gift can very easily be increased by 28% without any further cost to you. Please indicate if you wish your donation to be Gift Aided*

# Thank you!



Help us build the ...

# Education Centre @Discovery

[www.discoverycentres.org.uk](http://www.discoverycentres.org.uk)

Discovery Centre is a partnership project of the UK registered charity Adventure Project Trust

Reg. Charity No. 1047928

The Education Centre at Discovery

